



Leg 9 Addendum – Newport to Cardiff – Amendment 2

1 THE COURSE

Course 1-Pennant 1: Fort Adams Start-Lateral Buoys 11 & 9 to starboard - Castle Hill Gate -Lateral Buoys 9 & 11 to port - Start Line Gate - Gurneys Newport to port – Lateral Buoys 12 & 12a to starboard - Newport Bridge Gate - mark 2 to port - Newport Bridge Gate - Lateral Buoys 12 & 12a to port - Start Line Gate - Lateral Buoys 11 & 9 to starboard - Castle Hill Gate (the gate is the ‘Leaving mark’) - Brenton Reef buoys 6, 4, 2 & 2a to port - the Nantucket Shoal Line to port -Ice Limit to port –Mizen Head Light to port- Lavernock Gate - Cardiff Finish.

Course 2-Pennant 2: Fort Adams Start-Lateral Buoys 11 & 9 to starboard - Castle Hill Gate - Brenton Reef buoys 6, 4, 2 & 2a to port - Nantucket Shoal Line to port-Ice Limits to port –Mizen Head Light to port – Lavernock Gate - Cardiff Finish.

Course 3-Pennant 3: Castle Hill Start-Brenton Reef buoys 6, 4, 2 & 2a to port- Nantucket Shoal Line to port-Ice Limits to port – Mizen Head Light to port – Lavernock Gate - Cardiff Finish.

2 THE MARKS

		Latitude	Longitude	Description
a.	Fort Adams Start Castle Hill Start	41°28.850'N 41°28.100'N	71° 20.835'W 71° 22.390'W	Gunboat Catamaran Gunboat Catamaran
b.	Start Pin	Variable		White square raft mark with cube branding
c.	Buoy 11	41°29.010'N	71° 21.030'W	Green Lateral Buoy
d.	Buoy 9	41°28.644'N	71° 21.229'W	Green Lateral Buoy
e.	Castle Hill Gate	Variable		Yellow square raft marks with cube branding
f.	Start line Gate			Start Boat and start pin
g.	Gurneys Newport	41°29.500'N	71°20.000'W	Yellow square raft mark with cube branding
h.	Buoy 12	41°29.675'N	71°20.671'W	Red Lateral Buoy
i.	Buoy 12a	41°30.000'N	71°20.747'W	Red Lateral Buoy
j.	Newport Bridge Gate	41° 30.337'N 41° 30.260'N	71° 21.091'W 71° 20.750'W	Bridge pylons
k.	Mark 2	41° 30.870'N	71° 20.710'W	Yellow square raft marks with cube branding
l.	Leaving mark	Castle Hill Gate second time.		Yellow square raft mark with cube branding
m.	Brenton Reef 6	41° 27.443'N	71° 21.981'W	Red Lateral Buoy

n.	Brenton Reef 4	41° 26.581'N	71° 21.820'W	Red Lateral Buoy –Gong as fog signal
o.	Brenton Point Whistle Buoy 2	41° 25.943'N	71° 21.784'W	Red lateral Buoy – Whistle as fog signal
p.	Brenton Seal Ledge Bell Buoy 2a	41° 26.023'N	71° 20.783'W	Red lateral Buoy- bell as fog signal
q.	Rhode Island Sound Exclusion Zone	41° 22.650'N 41° 22.650'N 41° 11.110'N 41° 11.110'N 41° 09.200'N 41° 20.900'N 41° 22.720'N	71° 20.650'W 71° 25.950'W 71° 25.950'W 71° 20.650'W 71° 17.500'W 71° 05.400'W 71° 08.600'W	Virtual Marks
r.	Nantucket Shoal Line	40° 43.507'N 40° 44.389'N 40° 48.000'N	70° 00.646'W 69° 18.892'W 69° 03.000'W	Virtual Marks
s.	Boston Harbour Exclusion Zone	40° 48.000'N 40° 50.400'N 42° 16.460'N 42° 20.240'N	69° 03.000'W 68° 58.600'W 70° 02.936'W 69° 59.360'W	Virtual Marks
t.	Nantucket Exclusion Zone	40° 35.700'N 40° 36.800'N 40° 23.700'N 40° 22.600'N	70° 14.300'W 69° 15.120'W 69° 13.900'W 70° 13.800'W	Virtual Marks
u.	Ice Limits 1 2 3 4 5	46° 45.000'N 45° 00.000'N 45° 00.000'N 46° 30.000'N 49° 00.000'N	56° 00.000'W 53° 30.000'W 47° 00.000'W 42° 00.000'W 42° 00.000'W	Virtual Marks
v.	Mizen Head Light	51° 26.900'N	9° 49.300'W	Lighthouse
w.	Fastnet Exclusion Zone	51° 21.270'N 51°15.430'N 51°17.180'N 51°22.960'N	09° 36.790'W 09° 33.960'W 09° 24.540'W 09° 27.320'W	Virtual Marks
x.	Celtic Sea Exclusion Zone	51° 52.300N 51° 50.300N 51° 39.900N 51° 39.900N	05 °56.500W 05° 43.600W 05° 48.500W 06° 02.100W	Virtual Marks
y.	West off Scilly Exclusion Zone	50° 04.150N 50° 01.250N 49 °52.400N 49° 52.400N	06 °48.550W 06° 32.800W 06° 36.700W 06° 53.750W	Virtual Marks
z.	South off Scilly Exclusion Zone	49 °46.000N 49° 46.000N 49° 35.500N 49° 35.500N	06° 29.500W 06° 16.500W 06° 16.500W 06° 34.100W	Virtual Marks
aa.	Off Lands End Exclusion Zone	50° 20.000N 50° 20.000N 50° 01.000N 49 °53.550N	06° 05.050W 05° 49.600W 05° 49.600W 06° 05.050W	Virtual Marks
bb.	Lavernock Gate	51° 23.016'N 51° 21.746'N	03° 10.795'W 03° 08.214'W	South Cardinal Mark Red Lateral Buoy
cc.	Finish Line	51° 24.232'N 51° 24.183'N	03° 08.968'W 03° 08.551'W	Laid Inflatable mark South Cardinal Mark

Positions are approximate. Datum: to WGS 84.

3. THE START

- (a) The starting area will be off Fort Adams (or Castle Hill if Course no.3 is signalled).
- (b) The starting line will be between a staff displaying a 'START' flag on the Race Committee Boat at the starboard end of the line and a square raft mark with cube branding at the other end of the line.
- (c) The range and bearing to Castle Hill Gate will be displayed on the Start Boat and announced on VHF Channel 77 before the warning signal.
- (d) Individual Recall notification may be broadcast on the VHF Channel 77. Failure of the Race Committee to notify, delay in notification or the sequence of such notification shall not constitute grounds for redress. This amends RRS 62.1.
- (e) Addendum Q, excluding Q2.3, Q2.4, Q2.5, Q3.1(c), Q3.2 (b), shall apply from the preparatory signal for the *Leg* and ceases to apply between boats which have passed and cleared the Castle Hill gate for the second time.
- (f) When course 3 is used 3 (e) above shall not apply.
- (g) When course option 3 is used Boats should consider they have passed the leaving mark when they *start*.
- (h) The warning signal will be at 13:55h on Sunday 20th May 2018

4. LEG START EXCLUSION ZONES

Marshalling buoys will be laid around the racecourse to exclude spectator boats from the leg start racing area. **Boats shall not enter the marshalled spectator fleet, which is an obstruction.**

5. RHODE ISLAND SOUND EXCLUSION AREA

The Rhode Island Exclusion Zone is a polygon formed by straight line loxodromic segments linking the virtual marks listed in Para 2q above. The exclusion zone is an obstruction that boats shall not enter.

6. NANTUCKET SHOAL LINE

The Nantucket Shoal Line is a line formed by straight line loxodromic segments linking the adjacent virtual marks listed in Para 2r above, that a Boat shall leave to port. This line is an obstruction that boats shall not cross

7. BOSTON HARBOUR EXCLUSION AREA

The Boston Harbour Exclusion Zone is a polygon formed by straight line loxodromic segments linking the virtual marks listed in Para 2s above. The exclusion zone is an obstruction that boats shall not enter.

8. NANTUCKET TSS EXCLUSION ZONE

The NANTUCKET TSS Exclusion Zone is a polygon formed by straight line loxodromic segments linking the virtual marks listed in Para 2t above. The exclusion zone is an obstruction that boats shall not enter.

9. ICE LIMIT

The Ice Limit is a line formed by straight line loxodromic segments linking the adjacent virtual marks listed in Para 2u above, that a Boat shall leave to port. This line is an obstruction that boats shall not cross.

10. FASTNET EXCLUSION AREA

The Fastnet Exclusion Zone is a polygon formed by straight line loxodromic segments linking the virtual marks listed in Para 2w above. The exclusion zone is an obstruction that boats shall not enter.

11. CELTIC SEA EXCLUSION AREA

The Celtic Sea Exclusion Zone is a polygon formed by straight line loxodromic segments linking the virtual marks listed in Para 2x above. The exclusion zone is an obstruction that boats shall not enter.

12. WEST OF SCILLY EXCLUSION AREA

The West of Scilly Exclusion Zone is a polygon formed by straight line loxodromic segments linking the virtual marks listed in Para 2y above. The exclusion zone is an obstruction that boats shall not enter.

13. SOUTH OF SCILLY EXCLUSION AREA

The South of Scilly Exclusion Zone is a polygon formed by straight line loxodromic segments linking the virtual marks listed in Para 2z above. The exclusion zone is an obstruction that boats shall not enter.

14. LANDS END SEA EXCLUSION AREAS

The Lands End Exclusion Zone is a polygon formed by straight line loxodromic segments linking the virtual marks listed in Para 2aa above. The exclusion zone is an obstruction that boats shall not enter.

15. THE FINISHING LINE

(a) The finish line will be between a Laid Inflatable Mark and South Cardinal Mark 'South Cardiff'. The RC will be listening on VHF 77.

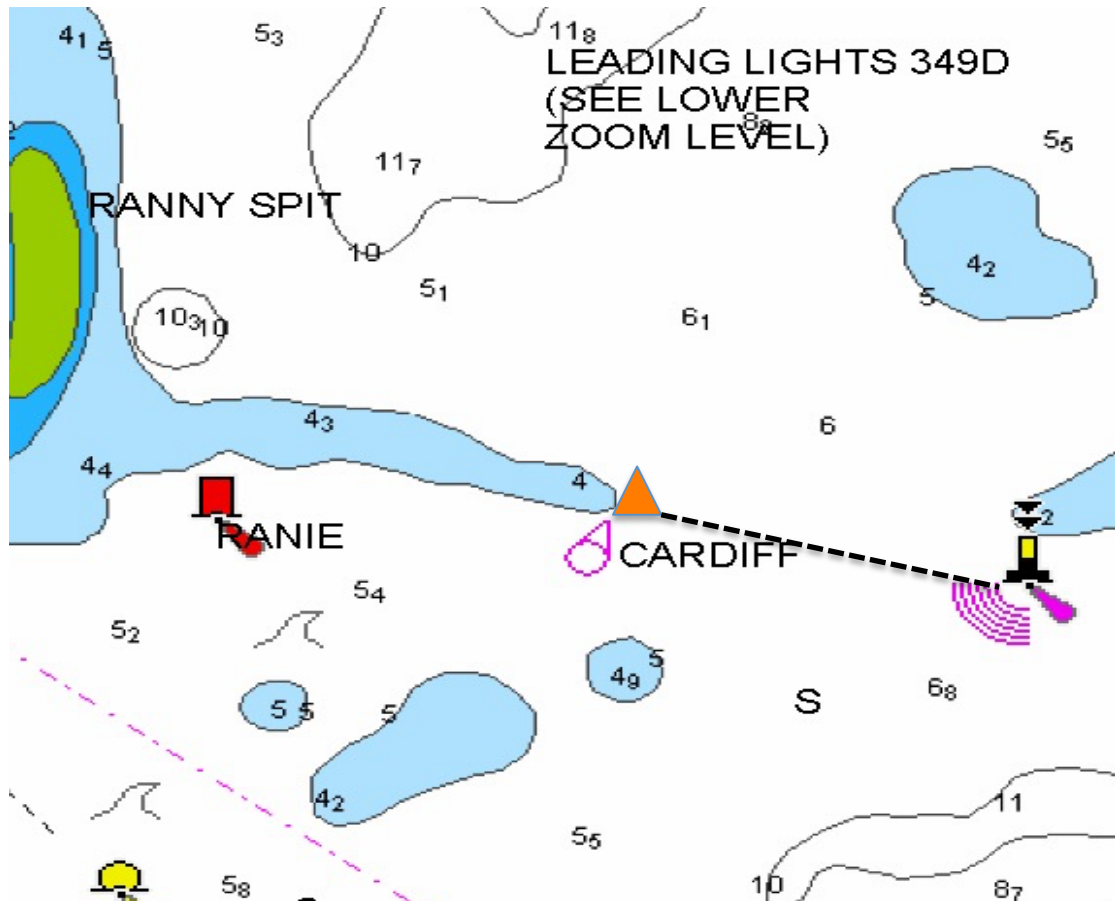
(b) RRS 32.2 final sentence is deleted and replaced with: After one or more boats have finished, the course may be shortened for boats still racing.

16. COURSE DIAGRAMS

NEWPORT START



CARDIFF FINISH



END