



Leg 10 Addendum **Amendment 1**

1 THE COURSE

Course 1 - Pennant 1, Start - Mark 1 to port - Mark 2 to port - Mark 1 to port - Mark 3 to port - Leaving gate - Mizzen Head to starboard – Muckle Flugga to starboard - Trubaduren to port - Brede Bade to port - Buskar Gate - Botto to starboard -Vassakaren to port - Gaveskar gate - Gothenburg Channel Limits -Alvsborg Gate - Älvsborg Bridge Finish.

Course 2 - Pennant 2, Start - Mark 1 to port - Mark 2 to port - Mark 1 to port - Mark 3 to port - Leaving Gate - Mizzen Head to Starboard – North Ronaldsay Lighthouse to Starboard - Trubaduren to port -Brede Bade to port - Buskar Gate - Botto to starboard - Vassakaren to port - Gaveskar gate - Gothenburg Channel Limits - Alvsborg Gate - Älvsborg Bridge Finish

Course 3 - Pennant 3, Start - Mark 1 to port - Mark 2 to port - Mark 1 to port - Mark 3 to port – Leaving Gate - Chicken Rock to starboard- North Ronaldsay Lighthouse to starboard - Trubaduren to port -Brede Bade to port- Buskar Gate-Botto to starboard - Vassakaren to port - Gaveskar gate - Gothenburg Channel Limits - Alvsborg Gate-Alvsborg Bridge Finish

2 THE MARKS

		Latitude	Longitude	Description
a.	Start Boat	Variable	Variable	Motor Catamaran
b.	Start Pin	Variable	Variable	Square raft mark with cube branding
c.	Mark 1	Variable	Variable	Square raft mark with cube branding
d.	Mark 2	Leeward of Start Line Gate	Variable	Square raft mark with cube branding
e.	Mark 3	Variable	Variable	Square raft mark with cube branding
f.	Start Line Gate (leaving mark)	Variable	Variable	Start Boat and Start Pin
g.	Celtic Sea Exclusion Zone	51° 52.300N 51° 50.300N 51° 39.900N 51° 39.900N	05° 56.500W 05° 43.600W 05° 48.500W 06° 02.100W	Virtual Marks

h.	Fastnet Exclusion Zone	51°21.270'N 51°15.430'N 51°17.180'N 51°22.960'N	09° 36.790'W 09° 33.960'W 09° 24.540'W 09° 27.320'W	Virtual Marks
i.	St Georges Channel Exclusion Zone	52°04.000'N 52°07.936'N 52°10.913'N 52°15.322'N 52°13.700'N 52°07.900'N	06° 10.500'W 06° 15.585'W 06° 09.600'W 06° 06.940'W 05° 59.216'W 06° 02.400'W	Virtual Marks
j.	Anglesey Exclusion Zone	53°22.250'N 53°30.365'N 53°31.100'N 53°35.122'N 53°34.100'N 53°24.600'N	04° 50.750'W 04° 40.800'W 04° 31.450'W 04° 32.330'W 04° 44.580'W 04° 56.130'W	Virtual marks
k.	Chicken Rock	54°02.274'N	04° 50.360'W	Lighthouse
l.	North Channel Exclusion Zone	55 25.100N 55 23.800N 55 15.850N 55 13.580N 55 20.000N 55 21.150N	006 14.800W 006 03.600W 005 53.950W 006 00.100W 006 07.800W 006 16.180W	Virtual marks
m.	Little Minch Exclusion Zone	57 28.955N 57 28.033N 57 26.157N 57 23.832N 57 24.000N 57 26.746N	006 55.531W 006 51.448W 006 52.870W 006 53.340W 006 57.800W 006 57.262W	Virtual marks
n.	South Norway TSS 1	57 47.759N 57 47.585N 57 49.408N 57 44.867N 57 39.907N 57 39.556N 57 39.841N	007 42.542E 007 49.687E 007 56.007E 007 59.953E 008 00.259E 007 52.973E 007 41.733E	Virtual marks
o.	South Norway TSS 2	58 02.659N 58 03.727N 58 05.439N 58 00.194N 57 57.356N 57 55.590N	008 42.509E 008 46.314E 008 49.111E 009 00.474E 008 55.851E 008 49.567E	Virtual marks
p.	South Norway TSS 3	58 29.531N 58 33.308N 58 28.061N 58 24.292N	009 29.089E 009 35.343E 009 46.848E 009 40.597E	Virtual marks
q.	South Norway TSS 4	57 50.450N 57 49.400N 57 49.300N 57 41.240N 57 41.420N 57 44.320N	006 36.500E 006 38.850E 006 41.850E 006 41.320E 006 32.970E 006 26.630E	Virtual marks
r.	Mizen Head	51°26.900'N	09° 49.300'W	Lighthouse

s.	North Ronaldsay		59°23.400N	02° 22.850'W	Lighthouse
t.	Muckle Flugga		60°51.322'N	00° 53.140'W	Lighthouse
u.	Trubaduren		57°35.690'N	11° 37.980'E	Lighthouse
v.	Brede Bade		57°37.873'N	11° 40.483'E	Virtual Mark
w.	Buskar Gate		57°38.150'N 57°37.970'N	11° 41.149'E 11° 42.095'E	Red lateral buoy Green Lateral buoy
x.	Botto		57°38.953'N	11° 43.174'E	Special Purpose beacon
y.	Vassakaren		57°39.298'N	11° 43.063'E	Special Purpose beacon
z.	Gaveskar Gate		57°39.688'N 57°39.522'N	11° 46.151'E 11° 46.427'E	Special Purpose beacon No 5 Mark
aa.	Gothenburg Channel Limits	1	57°39.688'N	11° 46.151'E	Gaveskar navigation mark
		2	57°40.539'N	11° 46.571'E	Bocken
		3	57°40.862'N	11° 48.182'E	No 27 mark
		4	57°41.084'N	11° 50.499'E	N° 32 tower mark
		5	57°40.866'N	11° 50.546'E	N° 33 tower mark
		6	57°40.679'N	11° 48.916'E	N° 29 tower mark
		7	57°39.833'N	11° 47.263'E	Cardinal mark
		8	57°39.522'N	11° 46.427'E	N° 5 mark
bb.	Alvsborg Gate		57°41.084'N 57°40.866'N	11° 50.499'E 11° 50.546'E	No 32 tower FI R3s No 33 tower FI (2) G6s
cc.	Alvsborg Bridge Gate Finish		57°41.450'N	11° 54.100'E	Line formed between the course side of the central bridge span

Positions are approximate. Datum: to WGS 84.

3 START

3.1

- (a) The starting area will be in the vicinity of North Cardiff Lateral Mark
- (b) The starting line will be between a staff displaying a 'START' flag on the Race Committee Boat at the starboard end of the line and a square raft mark with cube branding at the other end of the line.
- (c) The range and bearing of the variable mark 1 & 3 will be displayed on the Start Boat and announced on VHF Channel 77 before the warning signal.
- (d) Individual Recall notification may be broadcast on the VHF Channel 77. Failure of the Race Committee to notify, delay in notification or the sequence of such notification shall not constitute grounds for redress. This amends RRS 62.1.
- (e) Addendum Q, excluding Q2.3, Q2.4, Q2.5, Q3.1(c), Q3.2 (b), shall apply from the preparatory signal for the Leg and ceases to apply between boats which have passed and cleared the leaving gate.
- (f) The warning signal will be at 15:55h

4 LEG START EXCLUSION ZONES

Marshalling buoys may be laid around the racecourse in the leg start racing area. These marks are to exclude spectator boats and do not have any relevance to the *Boats*.

5 EXCLUSION ZONES

Each exclusion Zone listed in Para 2 above is a polygon formed by straight line loxodromic segments linking the virtual marks listed. The exclusion zones are all obstructions that boats shall not enter.

6 GOTHENBURG CHANNEL LIMITS

After passing through the Gaveskar gate *Boats* shall stay inside the area formed by straight lines between the adjacent marks 1, 2, 3 and 4 on the northern side and marks 5, 6, 7 and 8 on the southern side. These 2 lines shall rank as obstructions that a *Boat* shall not cross. Boats shall exit the area by passing through the Alvsborg gate.

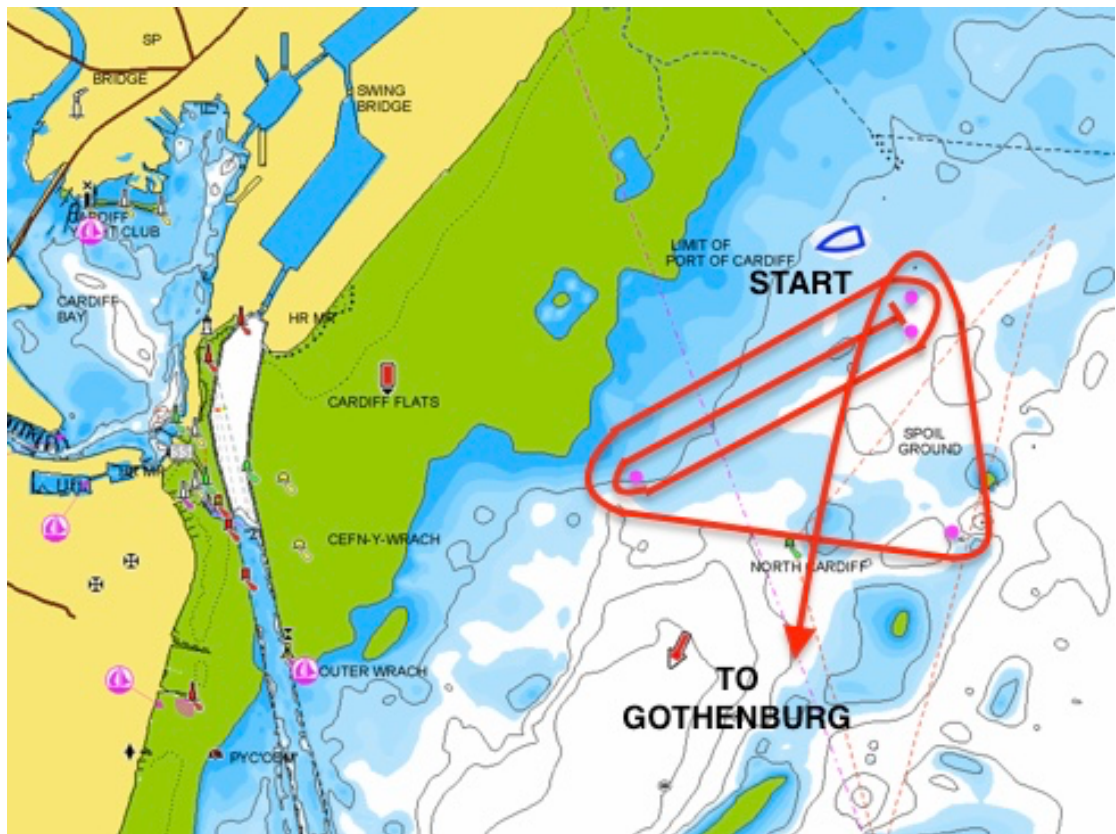
7 THE FINISHING LINE

(a) The finishing line will be between the course side of the central spans of the Alvsborg Bridge. The course may be shortened at a Gate.

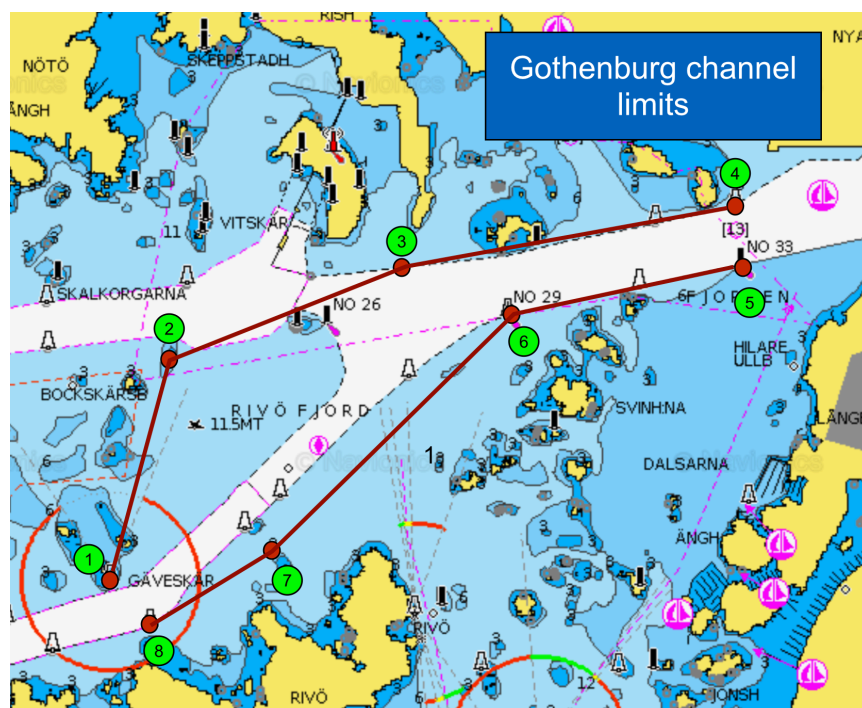
(b) RRS 32.2 final sentence is deleted and replaced with: After one or more boats have finished, the course may be shortened for boats still racing.

8 COURSE DIAGRAMS

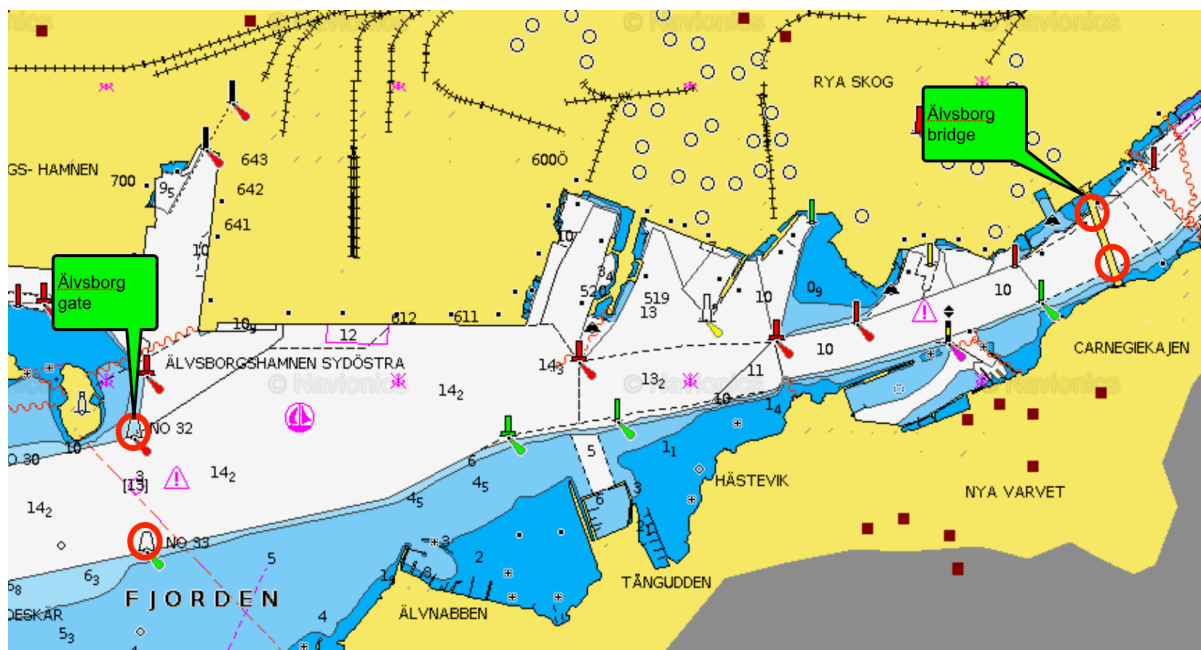
CARDIFF START



GOTHENBURG CHANNEL LIMITS



GOTHENBURG FINISH



END