



## Leg 11 Addendum – Gothenburg to The Hague

### 1 THE COURSE

Course 1 - Pennant 1, Start - Mark 1 Gate - Mark 2 to port – Start Line Gate - Mart 1 gate (Leaving Gate) - Alvsborg Gate- Gothenburg Channel Limits - Gaveskar gate - Vassakaren to starboard – Botto to Port – Buskar Gate – Brede Baden to starboard – Trubaduren to Starboard – South Norway Virtual Mark to Port – Silderon East to Starboard - Aarhus Outer Laid Mark to Port – Silderon East to Port – NAM 22 to Starboard - Finish

Course 2 - Pennant 2, Start - Mark 1 Gate - Mark 2 to port – Start Line Gate - Mart 1 gate (Leaving Gate) - Alvsborg Gate- Gothenburg Channel Limits - Gaveskar gate - Vassakaren to starboard – Botto to Port – Buskar Gate – Brede Baden to starboard – Trubaduren to Starboard – South Norway Virtual Mark to Port – Silderon East to Starboard - Aarhus Inner Laid Mark to Port – Silderon East to Port – NAM 22 to Starboard - Finish

### 2 THE MARKS

<b>a.</b>	Start Boat	Variable	Variable	Motor Catamaran
<b>b.</b>	Start Pin	Variable	Variable	Square raft mark with cube branding
<b>c.</b>	Mark 1 Gate	Variable	Variable	Gate formed of 2 Square raft marks with cube branding
<b>d.</b>	Mark 2	Variable	Variable	Square raft mark with cube branding
<b>e.</b>	Start Line Gate	Variable	Variable	Start Boat and Start Pin
<b>f.</b>	Mark 1 Gate (Leaving Mark)	Variable	Variable	Gate formed of 2 Square raft marks with cube branding
<b>g.</b>	Alvsborg Gate	57°41.080'N	11° 50.500'E	No 32 tower FI R3s
		57°40.860'N	11° 50.550'E	No 33 tower FI (2) G6s
<b>h.</b>	Gothenburg channel Limit 1	57°39.688'N	11° 46.151'E	Gaveskar navigation mark

	Gothenburg channel Limit 2	57°40.539'N	11° 46.571'E	Gula Bockskar (land)
	Gothenburg channel Limit 3	57°40.862'N	11° 48.182'E	No 27 mark
	Gothenburg channel Limit 4	57°41.080'N	11° 50.500'E	N° 32 tower mark
	Gothenburg channel Limit 5	57°40.860'N	11° 50.550'E	N° 33 tower mark
	Gothenburg channel Limit 6	57°40.676'N	11° 48.917'E	N° 29 tower mark
	Gothenburg channel Limit 7	57°39.833'N	11° 47.263'E	Cardinal mark
	Gothenburg channel Limit 8	57°39.522'N	11° 46.427'E	N° 5 mark
<b>i.</b>	Gaveskar Gate	57°39.688'N	11° 46.151'E	Special Purpose beacon
		57°39.522'N	11° 46.427'E	Land
<b>j.</b>	Vassakaren	57°39.298'N	11° 43.063'E	Special Purpose beacon
<b>k.</b>	Botto	57°38.953'N	11° 43.174'E	Special Purpose beacon
<b>l.</b>	Buskar Gate	57°38.150'N	11° 41.149'E	Red lateral buoy
		57°37.970'N	11° 42.095'E	Green Lateral buoy
<b>m.</b>	Brede Bade	57°37.873'N	11° 40.483'E	Virtual Mark
<b>n.</b>	Trubaduren	57°35.690'N	11° 37.980'E	Lighthouse
<b>o.</b>	South Norway Virtual Mark	58°18.000'N	10° 30.000'E	Virtual mark
<b>p.</b>	South Norway TSS 1	57 47.759N	007 42.542E	Virtual marks
		57 47.585N	007 49.687E	
		57 49.408N	007 56.007E	
		57 44.867N	007 59.953E	
		57 39.907N	008 00.259E	
		57 39.556N	007 52.973E	
		57 39.841N	007 41.733E	
<b>q.</b>	South Norway TSS 2	58 02.659N	008 42.509E	Virtual marks
		58 03.727N	008 46.314E	
		58 05.439N	008 49.111E	
		58 00.194N	009 00.474E	
		57 57.356N	008 55.851E	
		57 55.590N	008 49.567E	
<b>r.</b>	South Norway TSS 3	58 29.531N	009 29.089E	Virtual marks
		58 33.308N	009 35.343E	
		58 28.061N	009 46.848E	
		58 24.292N	009 40.597E	
<b>s.</b>	South Norway TSS 4	57 50.450N	006 36.500E	Virtual marks
		57 49.400N	006 38.850E	
		57 49.300N	006 41.850E	
		57 41.240N	006 41.320E	
		57 41.420N	006 32.970E	
		57 44.320N	006 26.630E	
<b>t.</b>	Silderon East	57 07.713N	11 22.427E	East Cardinal mark

<b>u.</b>	Aarhus Inner Laid Mark	56°09.400'N	10° 13.042'E	Square Raft mark with branding
<b>v.</b>	Aarhus Outer Laid Mark	56°10.000'N	10° 14.180'E	Square Raft Mark with Branding
<b>x</b>	NAM 22	52°12.849'N	004°18.242'N	Special Mark
<b>y</b>	Finish Line	52 06.411N 52 06.561N	004 15.320E 004 15.112E	KNS Mark Square Raft mark with Branding
<b>z.</b>	N Germany TSS 1	54°13.17 N	07° 21.92'E	Virtual Marks
		54°12.40 N	06° 20.71'E	
		54°06.15 N	05° 06.55'E	
		53°36.25 N	05° 51.70'E	
		53°35.51 N	04° 37.13'E	
		53°18.16 N	04° 27.49'E	
		53°10.98 N	04° 21.90'E	
		52°56.74 N	03° 53.40'E	
		52°33.62 N	03° 22.79'E	
		52°30.74 N	03° 30.26'E	
		52°35.80 N	03° 30.96'E	
		52°52.24 N	03° 53.73'E	
		52°43.38 N	04° 09.18'E	
		52°50.37 N	04° 17.07'E	
		52°58.56 N	04° 22.38'E	
		53°10.96 N	04° 35.39'E	
		53°22.85 N	04° 43.99'E	
53°29.54 N	05° 11.34'E			
53°41.79 N	06° 13.76'E			
53°55.00 N	07° 44.63'E			
54°02.86 N	07° 42.04'E			
<b>aa</b>	N Germany TSS 2	54°05.28 N	04° 56.86'E	Virtual Marks
		54°01.84 N	04° 08.79'E	
		53°57.12 N	04° 09.88'E	
		53°43.33 N	03° 38.76'E	
		53°22.85 N	03° 28.29'E	
		53°19.80 N	03° 39.67'E	
		53°29.89 N	03° 47.27'E	
		53°45.84 N	04° 23.29'E	
		53°59.93 N	04° 46.00'E	
		54°00.49 N	04° 54.08'E	
<b>bb</b>	Holland TSS 1	53°03.70 N	03° 18.60'E	Virtual Marks
		53°02.13 N	03° 26.40'E	
		52°54.10 N	03° 21.90'E	
		52°55.70 N	03° 14.17'E	
<b>cc</b>	Holland TSS 2	52 22.70n	003 47.77E	Virtual Marks
		52°21.95 N	03° 53.28E	
		52°18.97 N	03° 52.34'E	

		52°07.16 N	03° 55.97'E	
		52°07.12 N	03° 44.63'E	
		52°13.99 N	03° 44.98'E	
<b>dd</b>	Holland TSS 3	54 00.40n	03° 42.93'E	Virtual Marks
		53°58.52 N	03° 17.22'E	
		53°44.32 N	03° 01.29'E	
		53°21.86 N	02° 46.79'E	
		53°20.13 N	02° 54.53'E	
		53°29.15 N	03° 00.35'E	
		53°40.60 N	03° 27.95'E	
		53 53.030n	003 27.950E	
53°55.16 N	03° 44.81'E			
<b>ee</b>	Holland TSS 4	52°31.50 N	03° 56.35'E	Virtual Marks
		52°31.49 N	04° 06.69'E	
		52°35.40 N	04° 03.96'E	
		52°35.97 N	04° 06.40'E	
		52°33.27 N	04° 08.29'E	
		52°31.35 N	04 13.24'E	
		52°30.51 N	04° 20.37'E	
		52°27.60 N	04° 19.46'E	
		52°28.57 N	04° 10.98'E	
		52°26.54 N	03° 57.59'E	
52°25.50 N	03° 54.42'E			
<b>ff</b>	Holland TSS 5	52° 07.079N	003° 38.250E	Virtual Marks
		52° 09.065N	003° 32.634E	
		52° 06.599N	003° 30.201E	
		52° 05.036N	003° 34.654E	
<b>gg</b>	Holland TSS 6	51° 59.655N	004° 02.855E	Virtual Marks
		52° 02.381N	003° 56.350E	
		51° 58.742N	003° 13.873E	
		51° 58.132N	003° 14.051E	
		52° 01.289N	003° 53.771E	
51° 59.352N	004° 01.685E			
<b>hh</b>	WF Denmark 1	55°18.82 N	06° 52.09'E	Virtual Marks
		55°18.12 N	06° 45.70'E	
		55°05.38 N	06° 50.63'E	
		55°06.25 N	06° 56.82'E	
<b>ii</b>	WF Denmark 2	55° 39.02 N	007° 35.49 E	Virtual Marks
		55° 37.74N	007° 38.28 E	
		55° 33.53 N	007° 36.16 E	
		55° 33.24 N	007° 32.58 E	
		55° 34.85 N	007° 32.72 E	
		55° 35.76 N	007° 32.76 E	
		55° 36.75 N	007° 33.39 E	
55° 37.74 N	007° 34.07 E			

		55° 39.02 N	007° 35.42 E	
<b>jj</b>	WF Denmark 3	55° 30.58N	007° 52.69E	Virtual Marks
		55° 30.26N	007° 47.61E	
		55° 27.94N	007° 48.20E	
		55° 28.04N	007° 53.34E	
<b>kk</b>	WF Denmark 4	55° 14.80N	007° 14.50E	Virtual Marks
		55° 15.77N	007° 07.81E	
		55° 02.38N	007° 08.14E	
		55° 02.90N	007° 17.04E	
<b>ll</b>	WF Denmark 5	54° 32.46N	006° 18.99E	Virtual Marks
		54° 32.45N	006° 24.92E	
		54° 27.64N	006° 23.43E	
		54° 27.68N	006° 22.52E	
		54° 29.84N	006° 19.16E	
<b>mm</b>	WF Denmark 6	54° 27.01N	006° 02.99E	Virtual Marks
		54° 21.45N	005° 47.83E	
		54° 15.22N	005° 47.71E	
		54° 15.12N	005° 55.75E	
		54° 17.44N	006° 02.87E	
<b>nn.</b>	WF Denmark 7	55° 44.09N	007° 33.39E	Virtual Marks
		55° 44.93N	007° 51.18E	
		55° 37.81N	007° 42.04E	
		55° 41.36N	007° 33.39E	
<b>oo</b>	WF Denmark 8	54° 28.47N	007° 37.96E	Virtual Marks
		54° 28.52N	007° 45.79E	
		54° 23.08N	007° 46.62E	
		54° 20.33N	007° 37.94E	
<b>pp</b>	WF Denmark 9	54° 32.66N	007° 37.91E	Virtual Marks
		54° 32.65N	007° 47.26E	
		54° 30.11N	007° 46.78E	
		54° 30.11N	007° 37.91E	
<b>qq</b>	WF Denmark 10	56 42.14N	011 11.290E	Virtual Marks
		56 42.19N	011 09.400E	
		56 38.92N	011 07.400E	
		56 30.42N	011 11.030E	
		56 34.37N	011 19.540E	
		56 36.90N	011 15.080E	
<b>rr</b>	WF Holland 1	52° 36.60N	004° 12.62E	Virtual Marks
		52° 36.53N	004° 14.58E	
		52° 35.21N	004° 16.05E	
		52° 34.70N	004° 16.03E	
		52° 34.02N	004° 14.96E	
		52° 34.12N	004° 12.65E	
		52° 34.64N	004° 10.97E	
		52° 35.47N	004° 10.90E	

		52° 36.22N	004 11.61E	
<b>ss</b>	WF Holland 2	52° 37.91N	004° 22.13E	Virtual Marks
		52° 37.66N	004° 21.50E	
		52° 36.26N	004° 22.88E	
		52° 34.44N	004° 26.02E	
		52° 34.73N	004° 27.31E	
		52° 36.16N	004° 28.08E	
		52° 38.24N	004° 25.17E	
<b>tt</b>	WF Holland 3	52° 37.25N	004° 23.13E	Virtual Marks
		52° 26.14N	004° 12.40E	
		52° 25.90N	004° 12.87E	
		52° 22.33N	004° 10.08E	
		52° 23.31N	004° 06.87E	
		52° 25.62N	004° 09.00E	

Positions are approximate. Datum: to WGS 84.

### 3 START

#### 3.1

- (a) The starting area will be in the west of Alvsborg Bridge.
- (b) The starting line will be between a staff displaying a 'START' flag on the Race Committee Boat at the starboard end of the line and a square raft mark with cube branding at the other end of the line.
- (c) The range and bearing of the variable mark 1 & 3 will be displayed on the Start Boat and announced on VHF Channel 77 before the warning signal.
- (d) Individual Recall notification may be broadcast on the VHF Channel 77. Failure of the Race Committee to notify, delay in notification or the sequence of such notification shall not constitute grounds for redress. This amends RRS 62.1.
- (e) Addendum Q, excluding Q2.3, Q2.4, Q2.5, Q3.1(c), Q3.2 (b), shall apply from the preparatory signal for the *Leg* and ceases to apply between boats which have passed and cleared the leaving gate.
- (f) The warning signal will be at 13:55h

### 4 LEG START EXCLUSION ZONES

Marshalling buoys may be laid around the racecourse in the leg start racing area. These marks are to exclude spectator boats and do not have any relevance to the *Boats*.

### 5 EXCLUSION ZONES

Each exclusion Zone listed in Para 2 above is a polygon formed by straight line loxodromic segments linking the virtual marks listed. The exclusion zones are all obstructions that boats shall not enter.

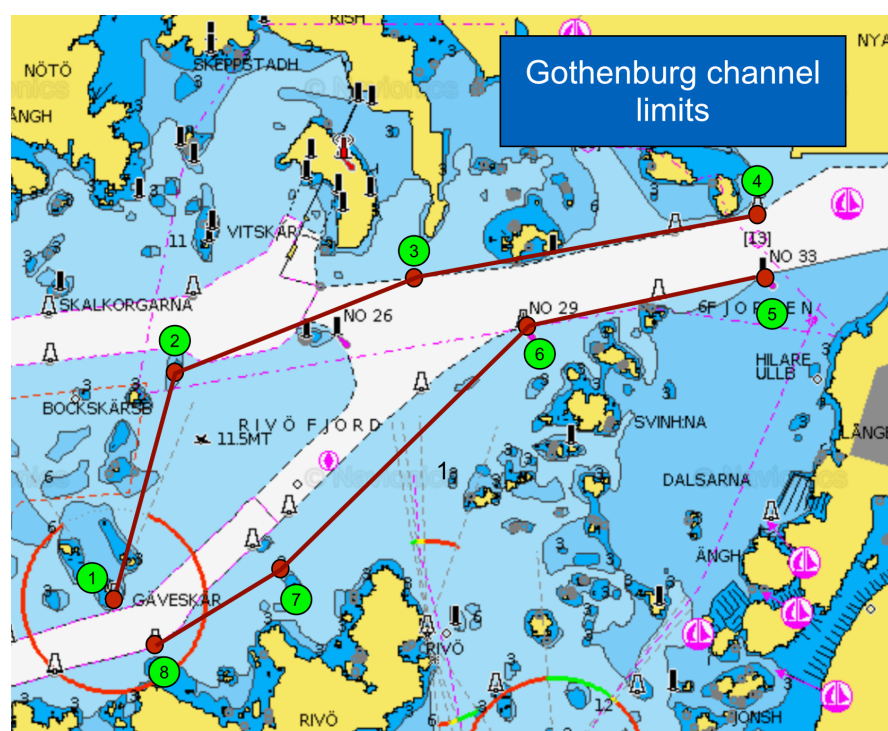
**6 GOTHENBURG CHANNEL LIMITS**

Boats shall pass inside the area formed by straight lines between the adjacent marks 1, 2, 3 and 4 on the northern side and marks 5, 6, 7 and 8 on the southern side these 2 lines shall rank as obstructions that a *Boat* shall not cross.

**7 THE FINISHING LINE**

(a) The finishing line will be between the course side of KNS mark and a laid Square Raft Mark. The course may be shortened at a Gate.

(b) RRS 32.2 final sentence is deleted and replaced with: After one or more boats have finished, the course may be shortened for boats still racing.

**8 COURSE DIAGRAM****GOTHENBURG CHANNEL LIMITS**

**END**