



Leg 11 Addendum – Gothenburg to The Hague – Amendment 5

1 THE COURSE

Start - Alvsborg Gate- Gothenburg Channel Limits - Gaveskar gate (Leaving Mark) - Vassakaren to starboard – Botto to Port – Buskar Gate – Brede Baden to starboard – Trubaduren to Starboard – Steingrunnen to Port - Laeso NE to Starboard - Silderon East to Starboard – Klokkegrund to Starboard - Oreflipen to Starboard - Aarhus Laid Mark to Starboard– Oreflipen to Port – Klokkegrun to Port – Silderon East to Port –Laeso NE to Port - ~~Steingrunnen to Port~~ - ~~South Norway Virtual Mark to Port~~- NAM 22 to Starboard - Finish

2 THE MARKS

| | | | | |
|----|------------------------------|-------------|--------------|-------------------------------------|
| a. | Start Boat | Variable | Variable | Motor Launch |
| b. | Start Pin | Variable | Variable | Square raft mark with cube branding |
| c. | Alvsborg Gate | 57°41.080'N | 11° 50.500'E | No 32 tower Fl R3s |
| | | 57°40.860'N | 11° 50.550'E | No 33 tower Fl (2) G6s |
| d. | Gothenburg channel Limit 1 | 57°39.688'N | 11° 46.151'E | Gaveskar navigation mark |
| | Gothenburg channel Limit 2 | 57°40.539'N | 11° 46.571'E | Gula Bockskar (land) |
| | Gothenburg channel Limit 3 | 57°40.862'N | 11° 48.182'E | No 27 mark |
| | Gothenburg channel Limit 4 | 57°41.080'N | 11° 50.500'E | N° 32 tower mark |
| | Gothenburg channel Limit 5 | 57°40.860'N | 11° 50.550'E | N° 33 tower mark |
| | Gothenburg channel Limit 6 | 57°40.676'N | 11° 48.917'E | N° 29 tower mark |
| | Gothenburg channel Limit 7 | 57°39.833'N | 11° 47.263'E | Cardinal mark |
| | Gothenburg channel Limit 8 | 57°39.522'N | 11° 46.427'E | N° 5 mark |
| e. | Gaveskar Gate (Leaving mark) | 57°39.688'N | 11° 46.151'E | Special Purpose beacon |
| | | 57°39.522'N | 11° 46.427'E | No 5 Mark |
| f. | Vassakaren | 57°39.298'N | 11° 43.063'E | Special Purpose beacon |

| | | | | |
|-----------|-----------------------------------|-------------|--------------|--------------------------------------------|
| g. | Botto | 57°38.953'N | 11° 43.174'E | Special Purpose beacon |
| h. | Buskar Gate | 57°38.150'N | 11° 41.149'E | Red lateral buoy |
| | | 57°37.970'N | 11° 42.095'E | Green Lateral buoy |
| i. | Brede Bade | 57°37.873'N | 11° 40.483'E | Virtual Mark |
| j. | Trubaduren | 57°35.690'N | 11° 37.980'E | Lighthouse |
| k. | Steingrunnen | 58 55.522N | 09 44.062E | East Cardinal Mark |
| l. | South Norway TSS 1 | 57 47.759N | 07 42.542E | Virtual marks |
| | | 57 47.585N | 07 49.687E | |
| | | 57 49.408N | 07 56.007E | |
| | | 57 44.867N | 07 59.953E | |
| | | 57 39.907N | 08 00.259E | |
| | | 57 39.556N | 07 52.973E | |
| m. | South Norway TSS 2 | 58 02.659N | 08 42.509E | Virtual marks |
| | | 58 03.727N | 08 46.314E | |
| | | 58 05.439N | 08 49.111E | |
| | | 58 00.194N | 09 00.474E | |
| | | 57 57.356N | 08 55.851E | |
| | | 57 55.590N | 08 49.567E | |
| n. | South Norway TSS 3 | 58 29.531N | 09 29.089E | Virtual marks |
| | | 58 33.308N | 09 35.343E | |
| | | 58 28.061N | 09 46.848E | |
| | | 58 24.292N | 09 40.597E | |
| o. | South Norway TSS 4 | 57 50.450N | 06 36.500E | Virtual marks |
| | | 57 49.400N | 06 38.850E | |
| | | 57 49.300N | 06 41.850E | |
| | | 57 41.240N | 06 41.320E | |
| | | 57 41.420N | 06 32.970E | |
| | | 57 44.320N | 06 26.630E | |
| p. | Laeso NE | 57 22.354N | 11 15.517E | Green Lateral Mark |
| q. | Silderon East | 57 07.713N | 11 22.427E | East Cardinal mark |
| r. | Klokkegrund | 56 08.105N | 10 44.473E | Green Lateral Mark |
| s. | Oreflipen | 56 05.964N | 10 41.276E | South Cardinal Mark |
| . | Aarhus Inner Laid Mark | 56°09.400'N | 10° 13.090'E | Square Raft mark with branding |
| u. | NAM 22 | 52°12.849'N | 04°18.242'E | Special Mark |
| v. | Finish Line | 52 06.411N | 04 15.320E | KNS Mark Square Raft mark with Branding |
| | | 52 06.561N | 04 15.112E | |
| w. | N Germany TSS 1 | 54°13.17 N | 07° 21.92'E | Virtual Marks |
| | | 54°12.40 N | 06° 20.71'E | |
| | | 54°06.15 N | 05° 06.55'E | |

| | | | | |
|------------|-----------------|------------|-------------|---------------|
| | | 53°36.25 N | 04° 51.70'E | |
| | | 53°35.51 N | 04° 37.13'E | |
| | | 53°18.16 N | 04° 27.49'E | |
| | | 53°10.98 N | 04° 21.90'E | |
| | | 52°56.74 N | 03° 53.40'E | |
| | | 52°33.62 N | 03° 22.79'E | |
| | | 52°30.74 N | 03° 30.26'E | |
| | | 52°35.80 N | 03° 30.96'E | |
| | | 52°52.24 N | 03° 53.73'E | |
| | | 52°43.38 N | 04° 09.18'E | |
| | | 52°50.37 N | 04° 17.07'E | |
| | | 52°58.56 N | 04° 22.38'E | |
| | | 53°10.96 N | 04° 35.39'E | |
| | | 53°22.85 N | 04° 43.99'E | |
| | | 53°29.54 N | 05° 11.34'E | |
| | | 53°41.79 N | 06° 13.76'E | |
| | | 53°55.00 N | 07° 44.63'E | |
| | | 54°02.86 N | 07° 42.04'E | |
| x. | N Germany TSS 2 | 54°05.28 N | 04° 56.86'E | Virtual Marks |
| | | 54°01.84 N | 04° 08.79'E | |
| | | 53°57.12 N | 04° 09.88'E | |
| | | 53°43.33 N | 03° 38.76'E | |
| | | 53°22.85 N | 03° 28.29'E | |
| | | 53°19.80 N | 03° 39.67'E | |
| | | 53°29.89 N | 03° 47.27'E | |
| | | 53°45.84 N | 04° 23.29'E | |
| | | 53°59.93 N | 04° 46.00'E | |
| | | 54°00.49 N | 04° 54.08'E | |
| y | Holland TSS 1 | 53°03.70 N | 03° 18.60'E | Virtual Marks |
| | | 53°02.13 N | 03° 26.40'E | |
| | | 52°54.10 N | 03° 21.90'E | |
| | | 52°55.70 N | 03° 14.17'E | |
| z | Holland TSS 2 | 52 22.70N | 003 47.77E | Virtual Marks |
| | | 52°21.95 N | 03° 53.28E | |
| | | 52°18.97 N | 03° 52.34'E | |
| | | 52°07.16 N | 03° 55.97'E | |
| | | 52°07.12 N | 03° 44.63'E | |
| 52°13.99 N | 03° 44.98'E | | | |
| aa | Holland TSS 3 | 54 00.40 N | 03° 42.93'E | Virtual Marks |
| | | 53°58.52 N | 03° 17.22'E | |
| | | 53°44.32 N | 03° 01.29'E | |
| | | 53°21.86 N | 02° 46.79'E | |
| | | 53°20.13 N | 02° 54.53'E | |
| | | 53°29.15 N | 03° 00.35'E | |
| 53°40.60 N | 03° 10.95'E | | | |

| | | | | |
|------------|---------------|-------------|--------------|---------------|
| | | 53 53.03 N | 03° 27.95 E | |
| | | 53°55.16 N | 03° 44.81'E | |
| bb | Holland TSS 4 | 52°31.50 N | 03° 56.35'E | Virtual Marks |
| | | 52°31.49 N | 04° 06.69'E | |
| | | 52°35.40 N | 04° 03.96'E | |
| | | 52°35.97 N | 04° 06.40'E | |
| | | 52°33.27 N | 04° 08.29'E | |
| | | 52°31.35 N | 04° 13.24'E | |
| | | 52°30.51 N | 04° 20.37'E | |
| | | 52°27.60 N | 04° 19.46'E | |
| | | 52°28.57 N | 04° 10.98'E | |
| | | 52°26.54 N | 03° 57.59'E | |
| 52°25.50 N | 03° 54.42'E | | | |
| cc | Holland TSS 5 | 52° 07.079N | 003° 38.250E | Virtual Marks |
| | | 52° 09.065N | 003° 32.634E | |
| | | 52° 06.599N | 003° 30.201E | |
| | | 52° 05.036N | 003° 34.654E | |
| bb. | Holland TSS 6 | 51° 59.655N | 004° 02.855E | Virtual Marks |
| | | 52° 02.381N | 003° 56.350E | |
| | | 51° 58.742N | 003° 13.873E | |
| | | 51° 58.132N | 003° 14.051E | |
| | | 52° 01.289N | 003° 53.771E | |
| | | 51° 59.352N | 004° 01.685E | |
| dd | WF Denmark 1 | 55°18.82 N | 06° 52.09'E | Virtual Marks |
| | | 55°18.12 N | 06° 45.70'E | |
| | | 55°05.38 N | 06° 50.63'E | |
| | | 55°06.25 N | 06° 56.82'E | |
| ee | WF Denmark 2 | 55° 39.02 N | 007° 35.49 E | Virtual Marks |
| | | 55° 37.74 N | 007° 38.28 E | |
| | | 55° 33.53 N | 007° 36.16 E | |
| | | 55° 33.24 N | 007° 32.58 E | |
| | | 55° 35.76 N | 007° 32.76 E | |
| | | 55° 37.74 N | 007° 34.07 E | |
| ff. | WF Denmark 3 | 55° 30.58N | 007° 52.69E | Virtual Marks |
| | | 55° 30.26N | 007° 47.61E | |
| | | 55° 27.94N | 007° 48.20E | |
| | | 55° 28.04N | 007° 53.34E | |
| gg | WF Denmark 4 | 55° 14.80N | 007° 14.50E | Virtual Marks |
| | | 55° 15.77N | 007° 07.81E | |
| | | 55° 02.38N | 007° 08.14E | |
| | | 55° 02.90N | 007° 17.04E | |
| hh | WF Denmark 5 | 54° 32.46N | 006° 18.99E | Virtual Marks |
| | | 54° 32.45N | 006° 24.92E | |
| | | 54° 27.64N | 006° 23.43E | |

| | | | | |
|------------|---------------|------------|-------------|---------------|
| | | 54° 27.68N | 006° 22.52E | |
| | | 54° 29.84N | 006° 19.16E | |
| ii. | WF Denmark 6 | 54° 27.01N | 006° 02.99E | Virtual Marks |
| | | 54° 21.45N | 005° 47.83E | |
| | | 54° 15.22N | 005° 47.71E | |
| | | 54° 15.12N | 005° 55.75E | |
| | | 54° 17.44N | 006° 02.87E | |
| ij | WF Denmark 7 | 55° 44.50N | 007° 32.04E | Virtual Marks |
| | | 55° 44.85N | 007° 41.83E | |
| | | 55 41.19N | 007 47.27E | |
| | | 55° 39.63N | 007° 45.44E | |
| | | 55° 37.62N | 007° 41.50E | |
| kk | WF Denmark 8 | 55 41.31N | 007 32.10E | Virtual Marks |
| | | 54° 28.47N | 007° 37.96E | |
| | | 54° 28.52N | 007° 45.79E | |
| | | 54° 23.08N | 007° 46.62E | |
| | | 54° 20.33N | 007° 37.94E | |
| ll | WF Denmark 9 | 54° 32.66N | 007° 37.91E | Virtual Marks |
| | | 54° 32.65N | 007° 47.26E | |
| | | 54° 30.11N | 007° 46.78E | |
| | | 54° 30.11N | 007° 37.91E | |
| mm | WF Denmark 10 | 56 42.14N | 011 11.290E | Virtual Marks |
| | | 56 42.19N | 011 09.400E | |
| | | 56 38.92N | 011 07.400E | |
| | | 56 30.42N | 011 11.030E | |
| | | 56 34.37N | 011 19.540E | |
| | | 56 36.90N | 011 15.080E | |
| nn | WF Denmark 11 | 55 03.63N | 007 48.00E | Virtual Marks |
| | | 55 03.50N | 007 46.00E | |
| | | 55 02.57N | 007 44.44E | |
| | | 55 00.53N | 007 44.37E | |
| | | 54 57.97N | 007 46.98E | |
| | | 54 57.97N | 007 48.02E | |
| oo | WF Holland 1 | 52° 36.60N | 004° 12.62E | Virtual Marks |
| | | 52° 36.53N | 004° 14.58E | |
| | | 52° 35.21N | 004° 16.05E | |
| | | 52° 34.70N | 004° 16.03E | |
| | | 52° 34.02N | 004° 14.96E | |
| | | 52° 34.12N | 004° 12.65E | |
| | | 52° 34.64N | 004° 10.97E | |
| | | 52° 35.47N | 004° 10.90E | |
| | | 52° 36.22N | 004° 11.61E | |
| pp. | WF Holland 2 | 52° 37.91N | 004° 22.13E | Virtual Marks |
| | | 52° 37.66N | 004° 21.50E | |
| | | 52° 36.26N | 004° 22.88E | |

| | | | | |
|-----------|---------------------------|------------|-------------|---------------|
| | | 52° 34.44N | 004° 26.02E | |
| | | 52° 34.73N | 004° 27.31E | |
| | | 52° 36.16N | 004° 28.08E | |
| | | 52° 38.24N | 004° 25.17E | |
| | | 52° 37.25N | 004° 23.13E | |
| qq | WF Holland 3 | 52° 26.14N | 004° 12.40E | Virtual Marks |
| | | 52° 25.90N | 004° 12.87E | |
| | | 52° 22.33N | 004° 10.08E | |
| | | 52° 23.31N | 004° 06.87E | |
| | | 52° 25.62N | 004° 09.00E | |
| rr | WF Holland 4 | 53 42.494N | 006 30.980E | Virtual Marks |
| | | 53 41.749N | 006 25.685E | |
| | | 53 40.577N | 006 26.125E | |
| | | 53 41.333N | 006 31.420E | |
| ss | South Norway Virtual Mark | 58 37.500N | 010 02.700E | Virtual Mark |

Positions are approximate. Datum: to WGS 84.

3 START

3.1

- (a) The starting area will be in the west of Alvsborg Bridge.
- (b) The starting line will be between a staff displaying a 'START' flag on the Race Committee Boat at the starboard end of the line and a square raft mark with cube branding at the other end of the line.
- (c) Individual Recall notification may be broadcast on the VHF Channel 77. Failure of the Race Committee to notify, delay in notification or the sequence of such notification shall not constitute grounds for redress. This amends RRS 62.1.
- (d) Addendum Q, excluding Q2.3, Q2.4, Q2.5, Q3.1(c), Q3.2 (b), shall apply from the preparatory signal for the *Leg* and ceases to apply between boats which have passed and cleared the leaving gate.
- (e) The warning signal will be at 13:55h

4 LEG START EXCLUSION ZONES

Boats shall not enter the marshalled spectator fleet.

5 EXCLUSION ZONES

Each exclusion Zone listed in Para 2 above is a polygon formed by straight line loxodromic segments linking the virtual marks listed. The exclusion zones are all obstructions that boats shall not enter.

6 GOTHENBURG CHANNEL LIMITS

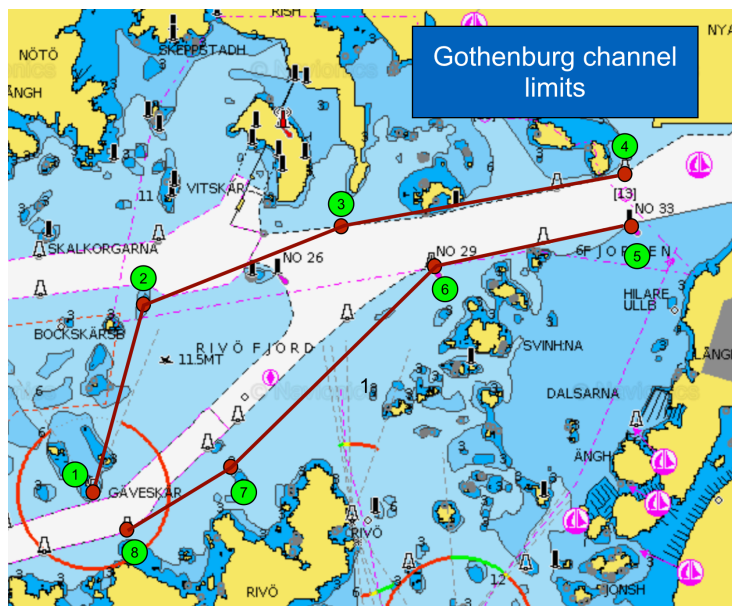
Boats shall pass inside the area formed by straight lines between the adjacent marks 1, 2, 3 and 4 on the northern side and marks 5, 6, 7 and 8 on the southern side these 2 lines shall rank as obstructions that a *Boat* shall not cross.

7 THE FINISHING LINE

(a) The finishing line will be between the course side of KNS mark and a laid Square Raft Mark.

8 COURSE DIAGRAMS

GOTHENBURG CHANNEL LIMITS



THE HAGUE FINISH:

